



COMMUNITY HOUSE a NEW MEN'S SHELTER

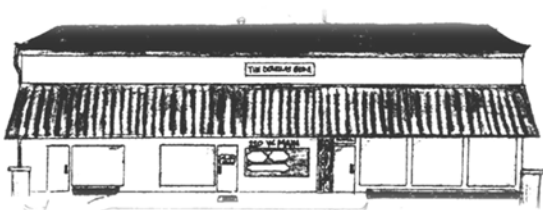
Chapel Hill Town Council
October 19, 2009

Two Facilities



Community House relocation to UNC land

FoodFirst combines Kitchen and food pantry
in Carrboro



FoodFirst

Centralized
Food Programs

Customer
Choice Models

Sharing Food
Resources

Safety-Net
Services

Community
Volunteers
Shareholders
and Partners



Community House



The new facility will have a profound impact on the lives of homeless men, as well as on the life of the community.



Who will come to Community House?

- *Consumers*
- *Volunteers* who provide service
- *Congregations* that partner with IFC
- *Businesses* that donate fresh food and commodities

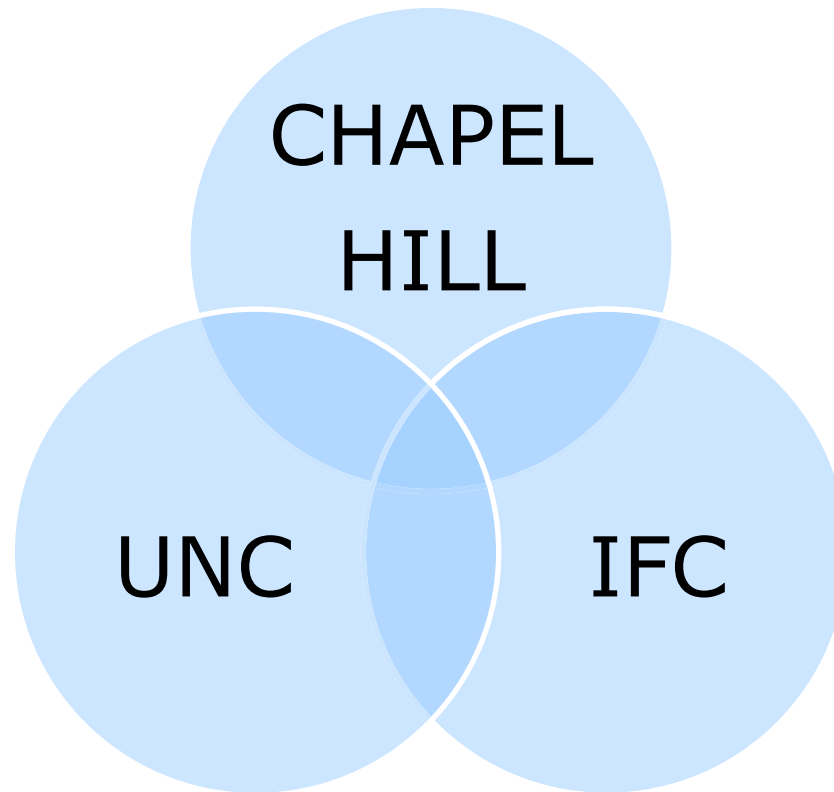




The University property is an ideal setting for a very different model that will help Community House residents to break the cycle of homelessness



PUBLIC/PRIVATE PARTNERSHIP



United Church Partnership

- planning and representation
- facility access
- sewer and water
- volunteers
- shared parking
- good neighbors



Community House

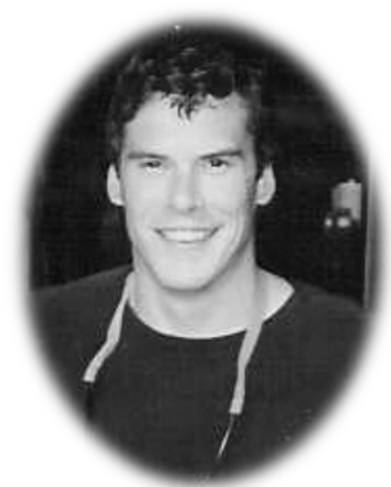
Continuum
of Services

Community
Resources

Health and
Safety

Measuring
Success

Housing
with
Services





Community House Programs

- 20 emergency shelter beds
 - two 10-bed dormitories
- 32 transitional housing beds
 - 5 quads for 20 residents
 - 6 doubles for 12 residents
- Food services/dining for 28 persons
- Job coaches, counselors, agency partners
- Referrals, volunteer opportunities
- Free clinic services

Free Clinic Options for All Residents

- Case management/ assessments
- Primary health care
- Dental services
- Mental health services/counseling
- Prescriptions/ support services
- Medicine management
- Preventive care





Time Table for Community House

PHASE ONE:

1. 5/4/09 - IFC requests expedited review and zoning text amendment for 50 beds
2. 5/15/09 - IFC submits Concept Plan
3. Town reviews concept plan before and after summer recess
4. SUP Submittal, November, 2009



Time Table for Community House

PHASE TWO:

1. Site plan, building schematic and regulatory reviews to be completed in May 2010



Time Table for Community House

PHASE THREE:

1. Predevelopment construction document reviews to be completed by October 2010
2. Funding for project to be raised by October 2010



Time Table for Community House

PHASE FOUR:

1. Construction bid completed in December 2010
2. Construction from December 2010 through December 2011
3. Final inspection punch list by January 2012

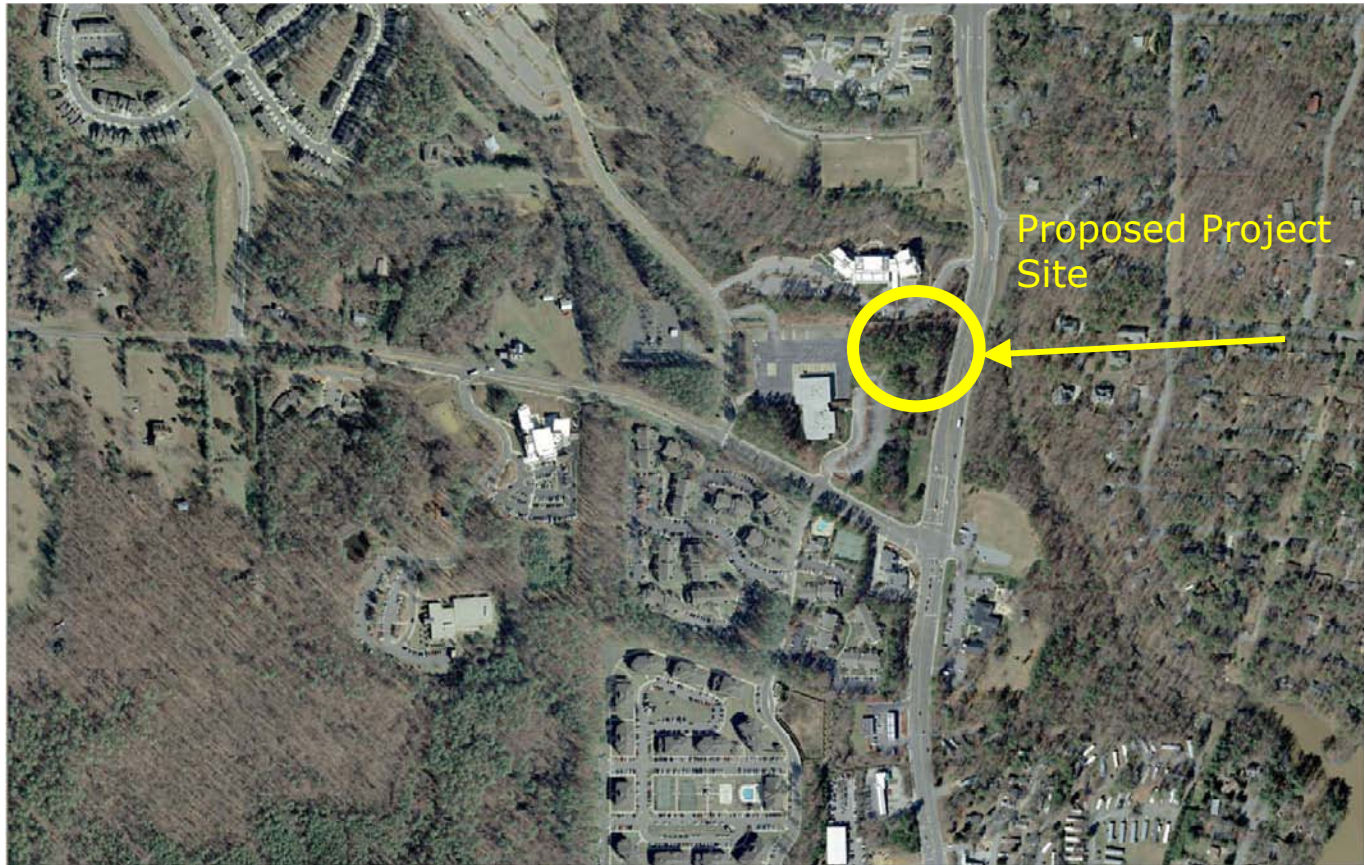


Time Table for Community House

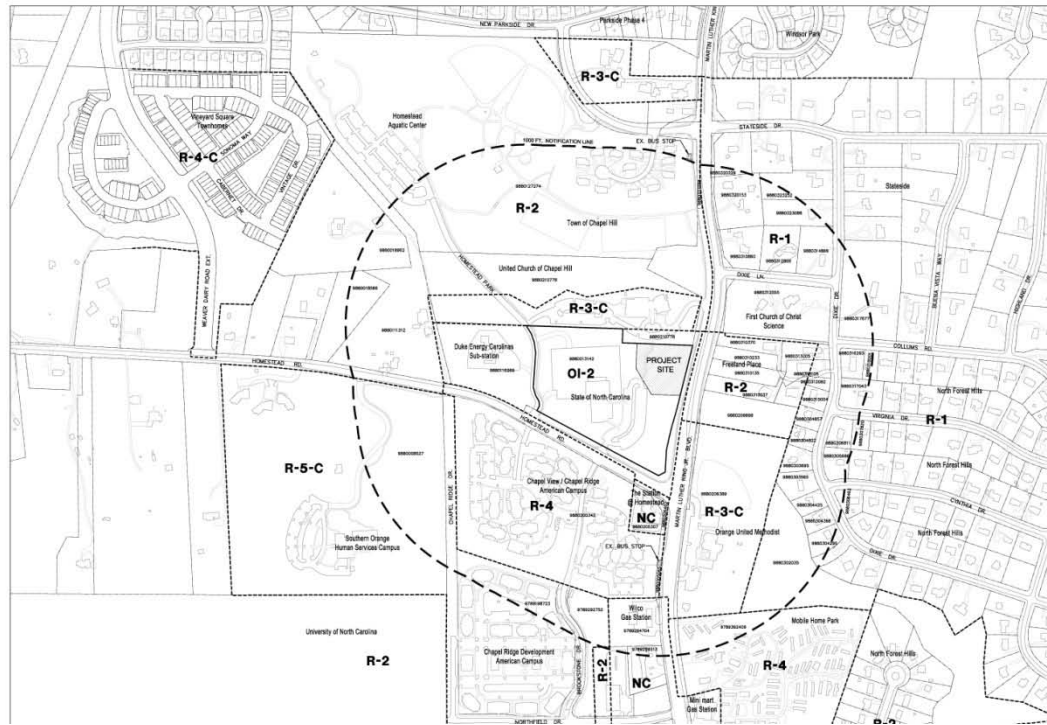
PHASE FIVE:

1. Occupancy in January/February 2012

Community House Site Location



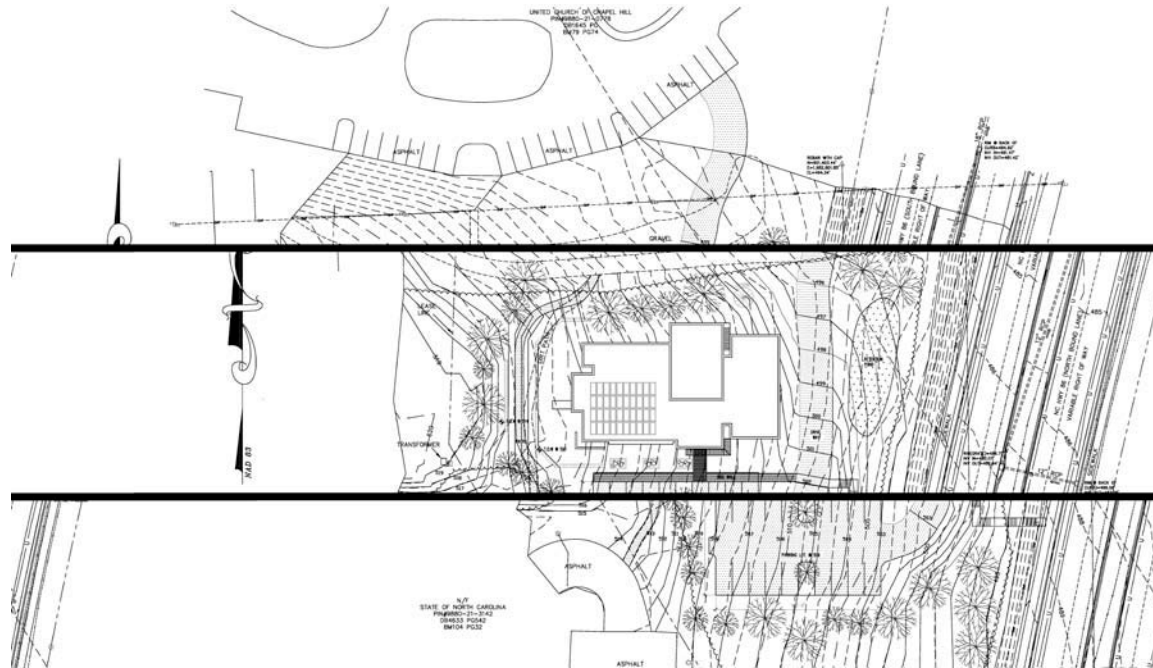
Community House Area Map



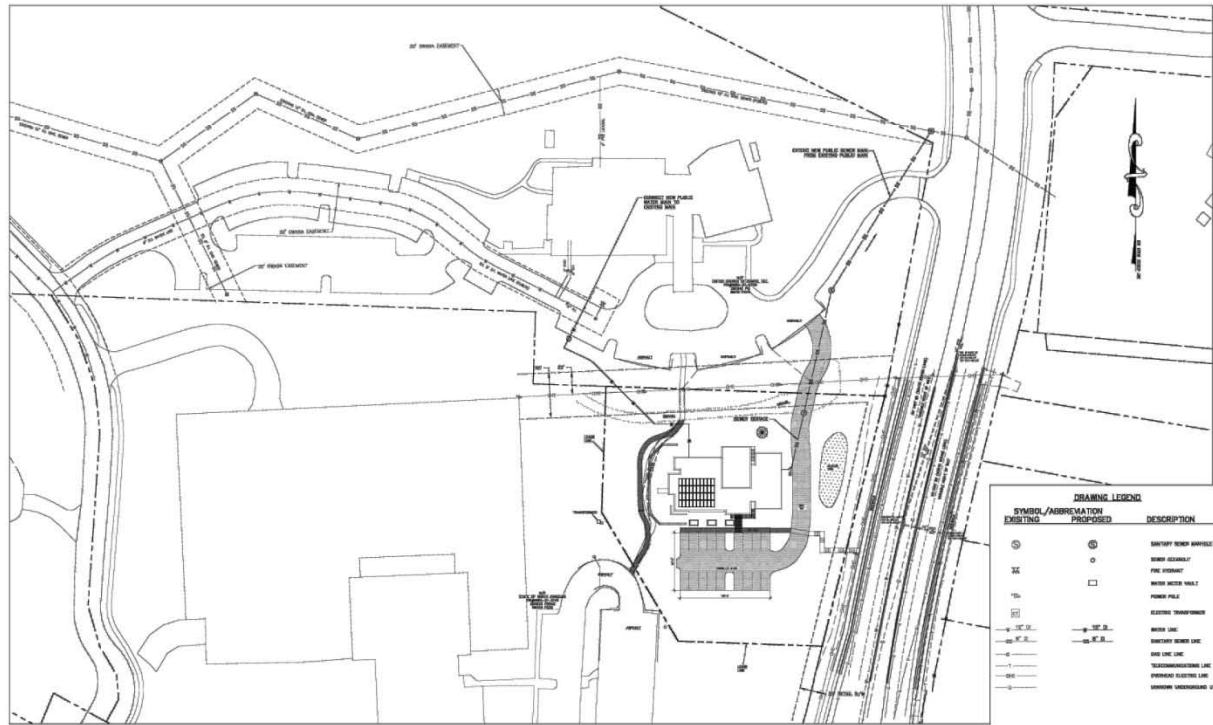
Existing Site




Community House Proposed Site



Community House Utilities



MEN'S SHELTER
THE INTER FAITH COUNCIL
CHAPEL HILL, NORTH CAROLINA

GGA ARCHITECTS /  BALLENTINE ASSOCIATES, PA

CONCEPTUAL UTILITY PLAN

CONCEPT PLAN
DOCUMENTS

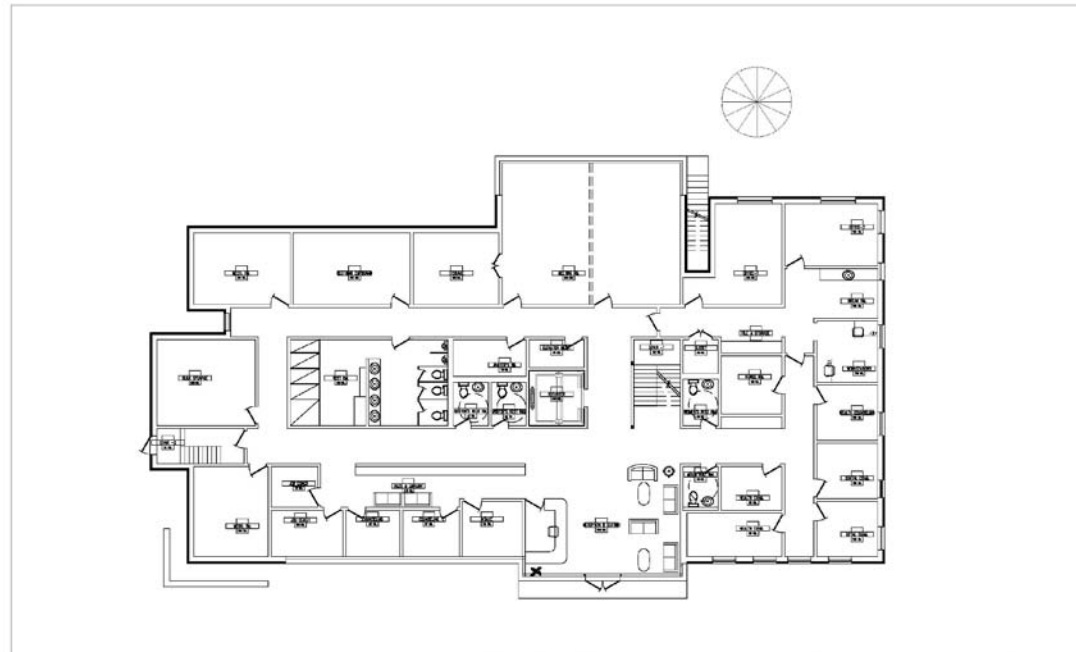
SCALE: 1"=40'
MAY 15, 2009



Community House Building

- 16,000 Square Feet on 2 levels
- 18 Parking Spaces
- 52 Residents
- Outdoor Garden area
- Outdoor Terrace
- Small Garden
- Energy Efficient Design
- Sustainable Features
- Employment Counseling
- Medical Services
- Dental Services

Community House Ground Floor



MEN'S SHELTER
THE INTER FAITH COUNCIL
CHAPEL HILL, NORTH CAROLINA
GGA ARCHITECTS

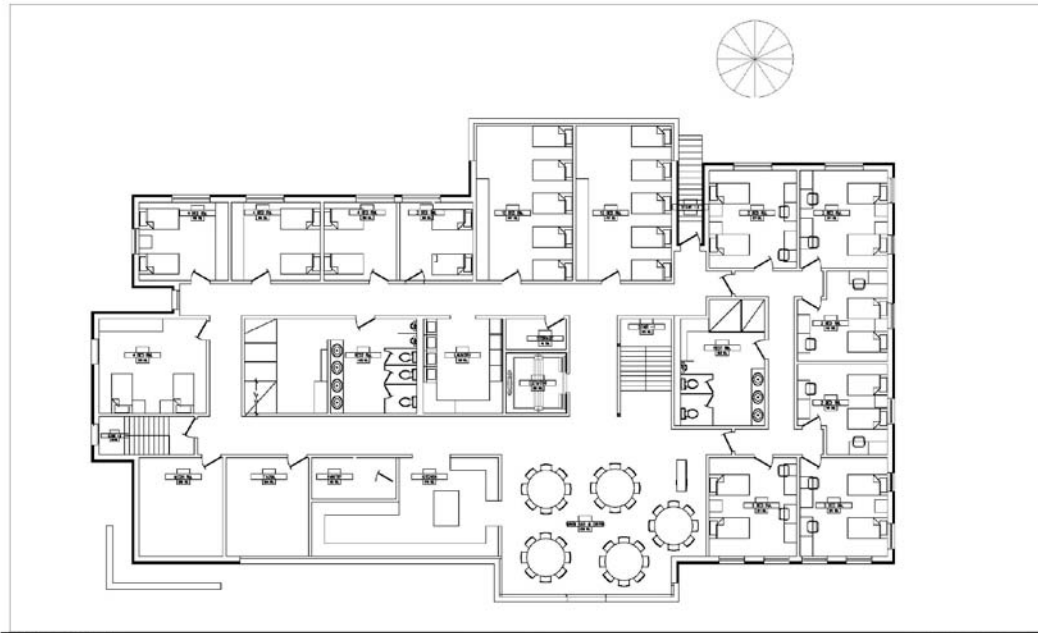
GROUND FLOOR

3/32"=1'-0"

BUILDING CONCEPT
PLAN 5.1

JUNE 15, 2009

Community House Second Floor



MEN'S SHELTER
THE INTER FAITH COUNCIL
CHAPEL HILL, NORTH CAROLINA
GGA ARCHITECTS

SECOND FLOOR

3/32"=1'-0"

BUILDING CONCEPT
PLAN 5.1

JUNE 15, 2009

Community House Site



Community House Concept

